

Experience different views
Discover Common Ground

Organization



friendship force
INTERNATIONAL

Board

President/CEO

Staff

Field Reps

**Club
Leaders**

Board

President/CEO

Staff

Field Reps

**Club
Leaders**

Board

```
graph TD; Board[Board] --- CEO[President/CEO]; CEO --- Staff[Staff]; Staff --- FieldReps[Field Reps]; Staff --- ClubLeaders[Club Leaders];
```

The diagram is an organizational chart with five levels. At the top is a yellow rounded rectangle labeled 'Board'. Below it is a gray rounded rectangle labeled 'President/CEO'. Below that is another gray rounded rectangle labeled 'Staff'. From the bottom center of the 'Staff' box, two lines branch out to two separate gray rounded rectangles: 'Field Reps' on the left and 'Club Leaders' on the right.

President/CEO

Staff

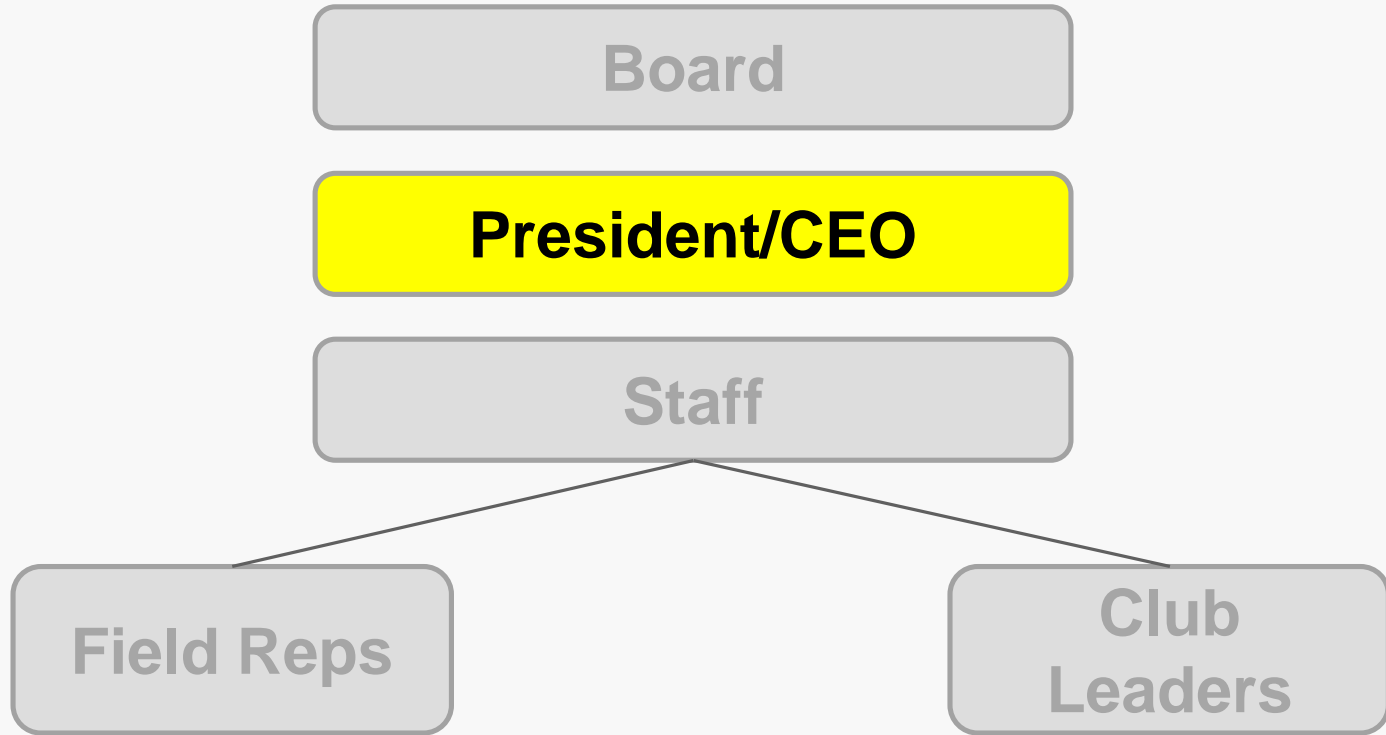
Field Reps

**Club
Leaders**

Board

- ▶ Define strategic objectives and guidelines;
- ▶ Devise and approve all club policies;
- ▶ Provide proper financial oversight;
- ▶ Recruit and assess the CEO and define his/her role and responsibilities.





President /C.E.O.



- ▶ Responsible for the successful implementation of FFI's strategic plan;
- ▶ Main spokesperson for the organization;
- ▶ Key liaison between Board, Club leadership and staff;
- ▶ Lead and manage headquarters.

Board

President/CEO

Staff

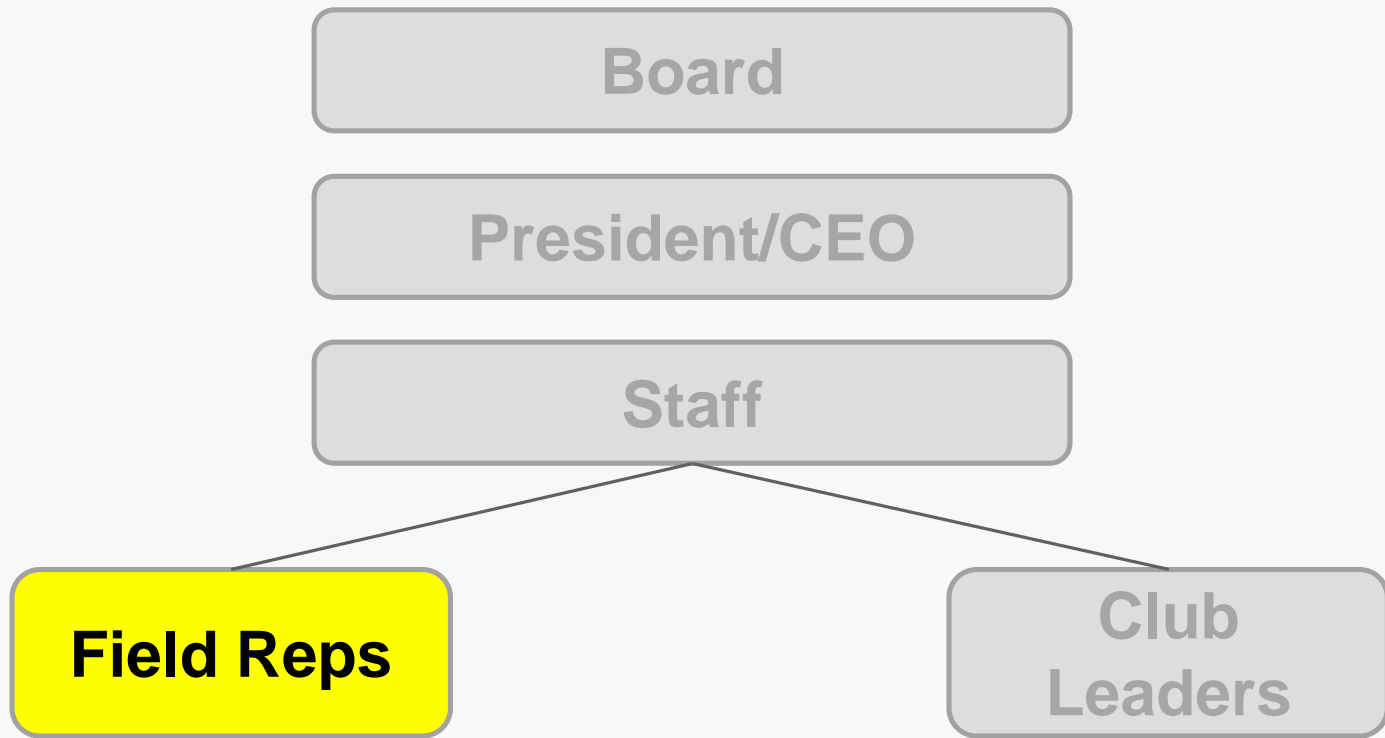
Field Reps

Club
Leaders

Staff



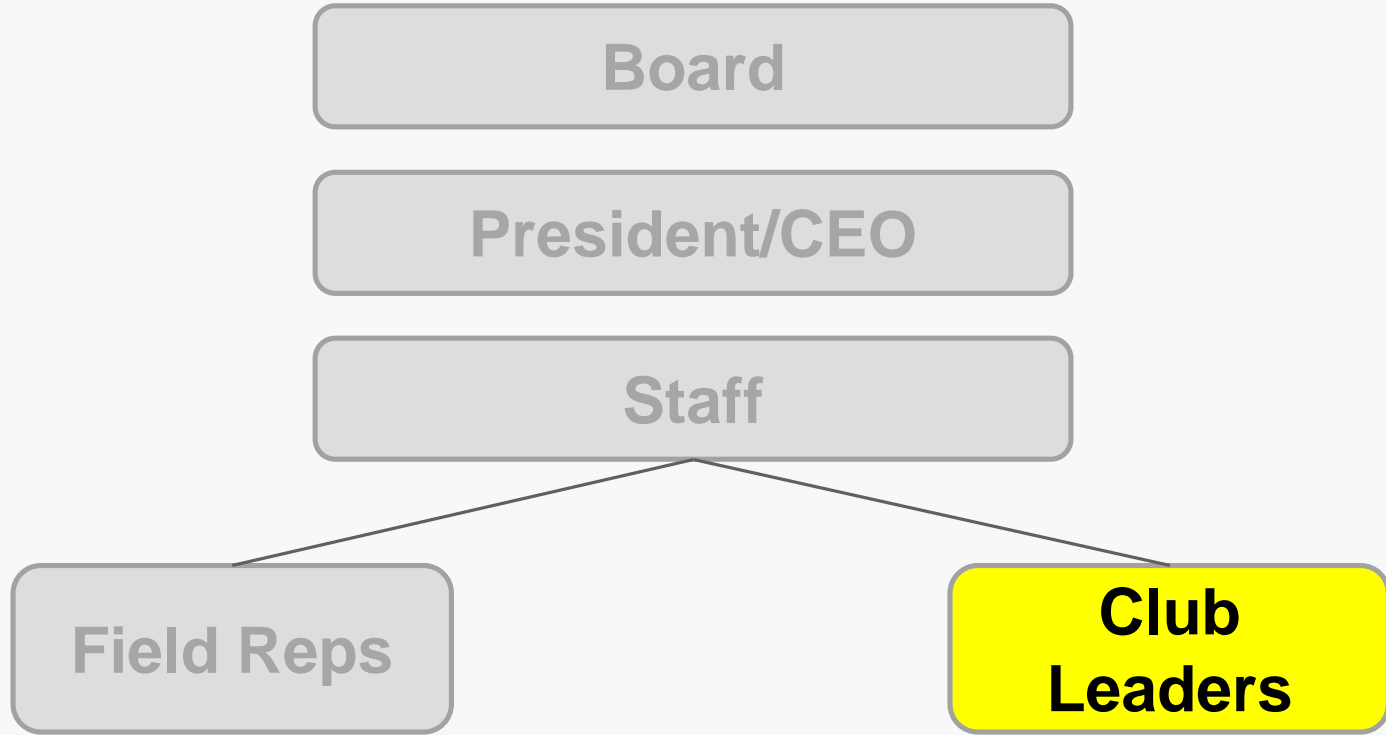
- ▶ Support all clubs and members;
- ▶ Implement and enforce Policies and Guidelines;
- ▶ Support the CEO in reaching operational objectives;
- ▶ Collaborate with Field Reps.



Field Reps

- ▶ Facilitate communication between staff and clubs;
- ▶ Suggest strategies to foster FFI's growth;
- ▶ Provide feedback and advice to staff;
- ▶ Work along with staff and clubs to provide updates and training.





Club Leaders



- ▶ Manage their clubs, both operationally and financially;
- ▶ Encourage relationship building among members and prospective members;
- ▶ Organize FFI's Journeys, both inbound and outbound;
- ▶ Implement and enforce Club Policies and Guidelines.

Experience Different Views
Discover Common Ground



friendship force
INTERNATIONAL